

# High Traffic Floor Polish 21% Solids



## Product Usage Guide

### BD020-5

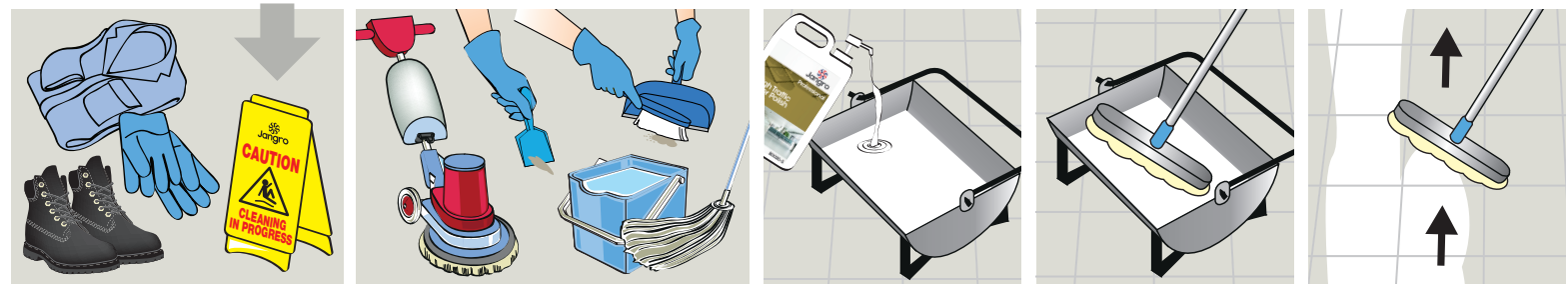


#### Health & Safety

Please refer to relevant COSHH Safety Data Sheet



Scan for further product details



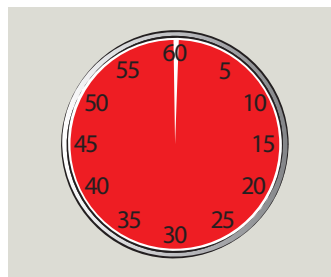
**1** Use appropriate PPE as indicated in the Safety Data Sheet and place Safety Signs.

**2** Prepare the floor, remove all traces of old polish/sealer. Ensure floor is clean dry and neutral.  
Refer to the Jangro Floor care Chart or the product Usage Guide for Floor Polish Remover for guidance on floor preparation.

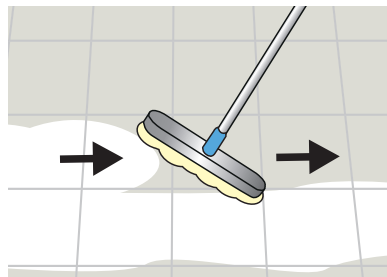
**3** Pour polish into bucket or tray. (undiluted).

**4** Place flat mop or applicator into polish. Remove surplus.

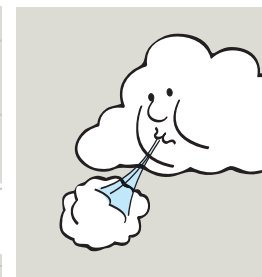
**5** Apply polish to dry floor, thinly and evenly in straight lines.



**6** Leave to dry thoroughly. Approximately 1 hour.



**7** Ensure floor is free from debris/dust before applying a second coat. Apply in opposite direction to the first. Leave a 2.5-5cm gap from the edge.



**8** Leave to dry. Light traffic 4-8 hours, heavy traffic 24-48 hours.



**9** Remove Safety Signs.



**10** For best results maintain with Jangro Floor Maintainer, BD030-5



A third coat may be required on old worn floors.