

# Dry Foam Carpet Cleaner



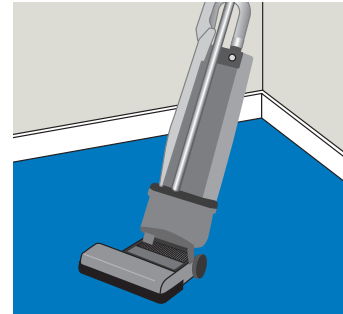
When dosing concentrate chemicals always use the recommended PPE, and always read the labels to check best practice for handling both the undiluted & ready to use solutions.

## Product Usage Guide

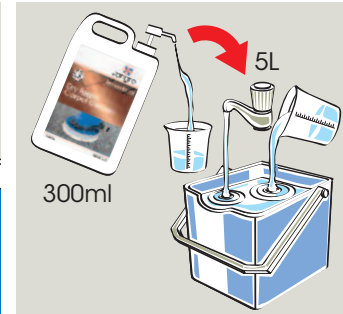
### BE011-5



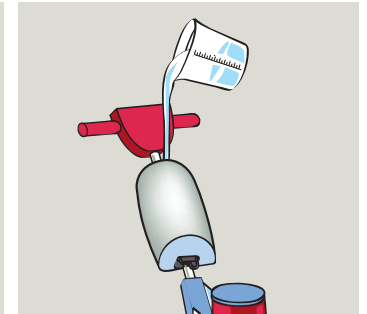
**1** Use appropriate PPE as indicated in the Safety Data Sheet and place Safety Signs.



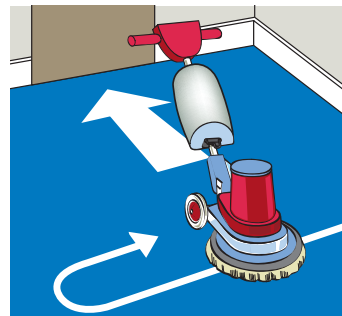
**2** Clean carpet with vacuum cleaner.



**3** Dilute 300ml per 5 litres of cold water.



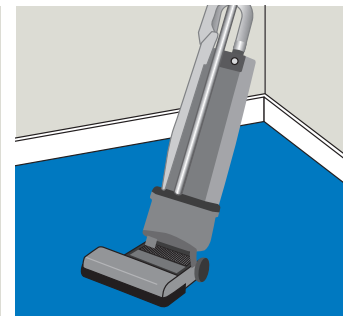
**4** Add to tank on scrubbing machine.



**5** Shampoo carpet with carpet shampoo brush, starting furthest away from the door.



**6** Leave to dry.



**7** Clean carpet with vacuum cleaner.



**8** Remove Safety Signs.

### Health & Safety

Please refer to relevant COSHH Safety Data Sheet



Scan for further product details



Not suitable for use with hot water extraction machines.

[www.jangro.net](http://www.jangro.net)