

## Product Usage Guide

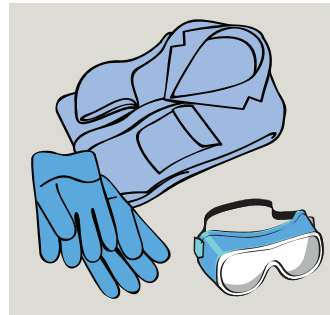
### Professional

### BA053-5

Passes  
EN 1276,  
13704, 1650,  
14476 &  
14675.



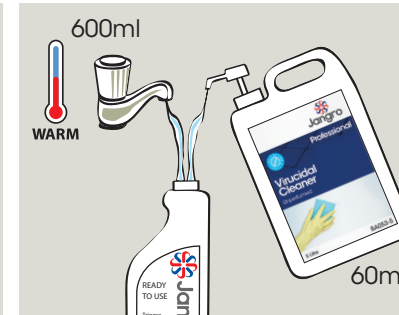
### For Spray and Wipe Applications



**1** Use appropriate PPE as indicated in the Safety Data Sheet.



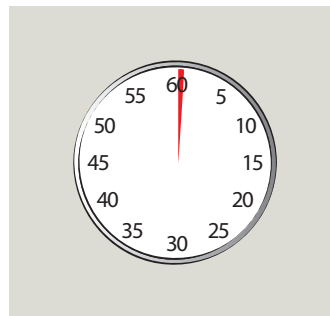
**2** Place Safety Signs.



**3** Dilute 60ml to 600ml water in a trigger spray bottle.



**4** Spray onto surface.



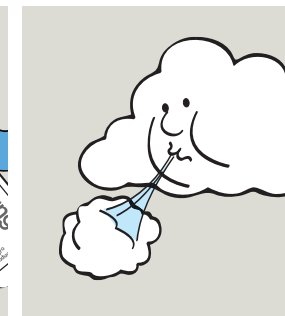
**5** Leave for 30 seconds then wipe clean surface.



**6** Wipe clean surface.



**7** For protection against Norovirus, spray surface again.



**8** Leave to air dry.



**9** Remove Safety Signs.

### Health & Safety

Please refer to relevant COSHH Safety Data Sheet



Scan for further product details